

Smart Probe

Tank Gauging



Description

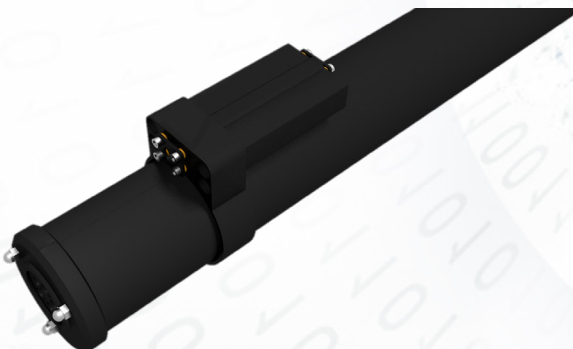
Smart Probe® is a tank gauge probe with optical technology which performs level measurements and tightness leak detection with high accuracy. Designed to S2 System® tank gauge system, it can also measure the product quality with cromasID® version.

Features and Benefits

- Accurate fuel level measurement with 0,01 mm resolution.
- Temperature measurement with up to 8 sensors with 0,0625°C sensibility allowing net volume calculation;
- Sealed Float exclusive assembly provides precise delivery even in high vibration environments;
- Water Level measurement (opcional);
- Local interface supporting up two enviromental monitoring sensors;
- Connects direct in S2 System for real time reading;
- Provides sixteen alarms and self diagnostics;
- Self calibrated;
- Option with internal encryption for safe purposes;
- Saves delivery registers internally for audit purposes;
- Tightness leak deteccion for 0,378 lts/h (0.1Gl/h);

CromaID®

The CromaID® is an optional and exclusive device part of Smart Probe® which allows a fuel quality pattern analysis. Detect fuel cross-over or fraud using light absorbing principle of each product existing in tank. Self calibrating at each delivery with high resolution reading.

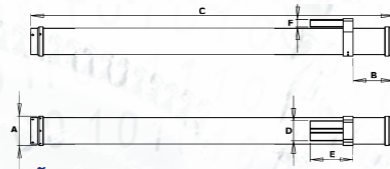


Installation

Fits on 3-inch or 4-inch openings of the tank. For more accuracy, rests with no gaps in the bottom of the tank.

Models

Available several models to match tank size. Models shown is table according the following dimensions.



Dimensions

Model	A(mm)	B(mm)	C(mm)	D(mm)	E(mm)	F(mm)
SP03	Ø70	87	358,5	48	100	17
SP06	Ø70	87	678,5	48	100	17
SP09	Ø70	87	998,5	48	100	17
SP13	Ø70	87	1318,5	48	100	17
SP16	Ø70	87	1638,5	48	100	17
SP19	Ø70	87	1958,5	48	100	17
SP22	Ø70	87	2278,5	48	100	17
SP25	Ø70	87	2598,5	48	100	17
SP29	Ø70	87	2918,5	48	100	17
SP32	Ø70	87	3238,5	48	100	17
SP35	Ø70	87	3558,5	48	100	17
SP38	Ø70	87	3878,5	48	100	17

Technical Specifications

Weight	11,8 Kg (SP19) / 14 Kg (SP25)
Temperature Range	0 a 50°C (32 a 122°F)
Floating Kit	Product and Water
Installation	Sump
Power Requirements	12 VDC 100mA
Communication	RS 485 (SmartBox)
Tightness Test	0.1 gl/h (378 ml/h)
Approvals / Certifications	NCC 17.0045

Intrinsically Safety Parameters

BR - Ex ia IIA T4	
Input	Sensor Output
$U_i = 15,76 \text{ V}$	$U_o = 3,4 \text{ V}$
$I_i = 400 \text{ mA}$	$I_o = 4 \text{ mA}$
$P_i = 1,6 \text{ W}$	$P_o = 4 \text{ mW}$
$C_i = \text{negligible}$	$C_o = 1000 \mu\text{F}$
$L_i = \text{negligible}$	$L_o = 1000 \text{ mH}$
$T_{amb} : -20 \text{ °C a } 50 \text{ °C}$	

Considering technological continuous upgrade, any modifications can be made without notice. Photos only for illustration purposes. Version 7 2002